



UNIVERSITY OF  
**GEORGIA**

Mary Frances Early  
College of Education

*Department of Kinesiology*

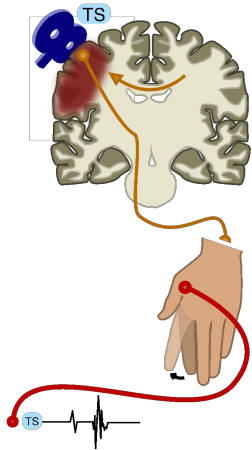
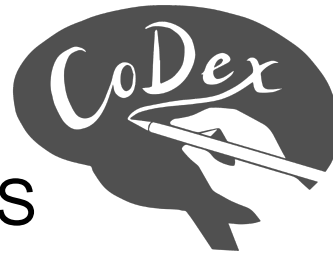
*Cognition and Dexterity Laboratory*

**Jing Xu, Ph.D.** Assistant Professor

Department of Kinesiology, COE | Neuroscience, ILS  
Cognition and Dexterity (CoDex) Laboratory

Neurostimulation Laboratory

<http://codexlab.org>



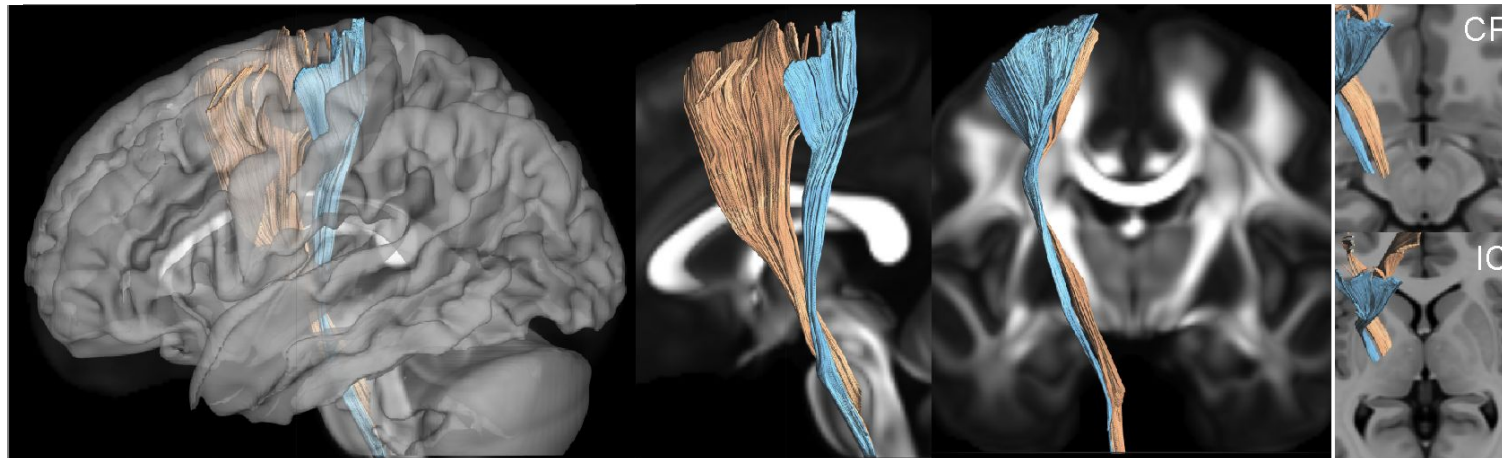
## From Neurobiology to Effective Therapies for Human Motor Skills

1. What are the behavioral and neural mechanisms for hand dexterity?
2. What are the learning and control principles for motor skill?
3. How to design effective assessment and rehabilitation therapies?

surface view

sagittal view

coronal view



# Design effective assessment and rehabilitation therapies

