

Main Questions

- Mechanisms that mediate stress-induced relapse to alcohol seeking and escalated alcohol consumption
- Sex differences in drug taking behavior and sensitivity to aversion
- Oxycodone self-administration and relapse-like behavior
- Mechanisms that mediate the comorbidity of depression and alcohol abuse

Current Students



Kristen

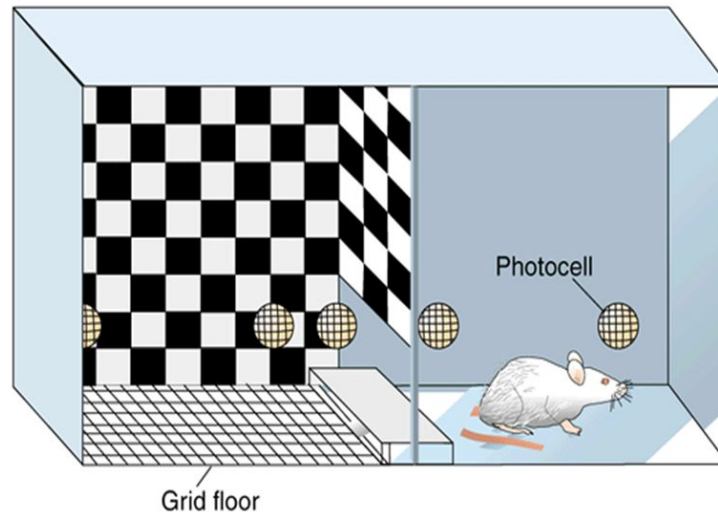


Miranda

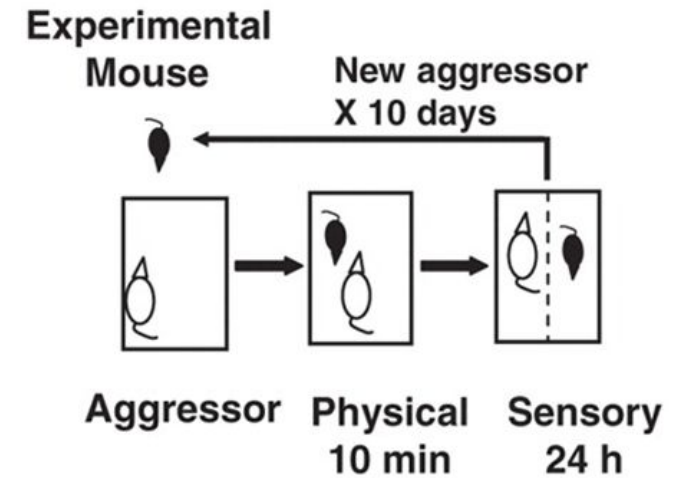
Behavioral Models



Operant Self-Administration



Conditioned Place Preference



Social Defeat

Additional Behavioral Methods: Anxiety Testing, Sucrose Preference, Voluntary Homecage Consumption, Aversion Resistance
Cellular/Molecular Methods: qPCR, Immunohistochemistry, Gel Shift Assays